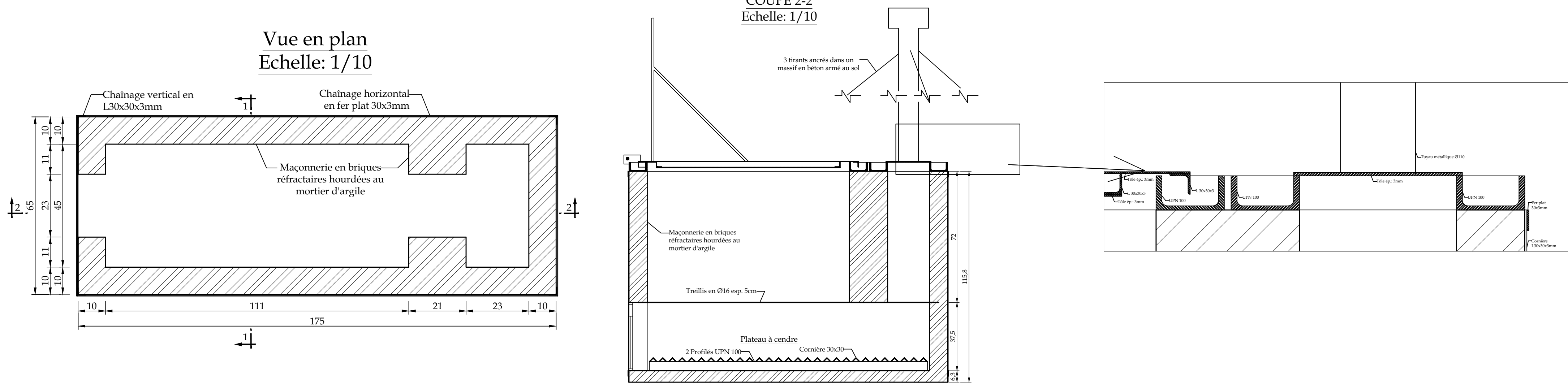
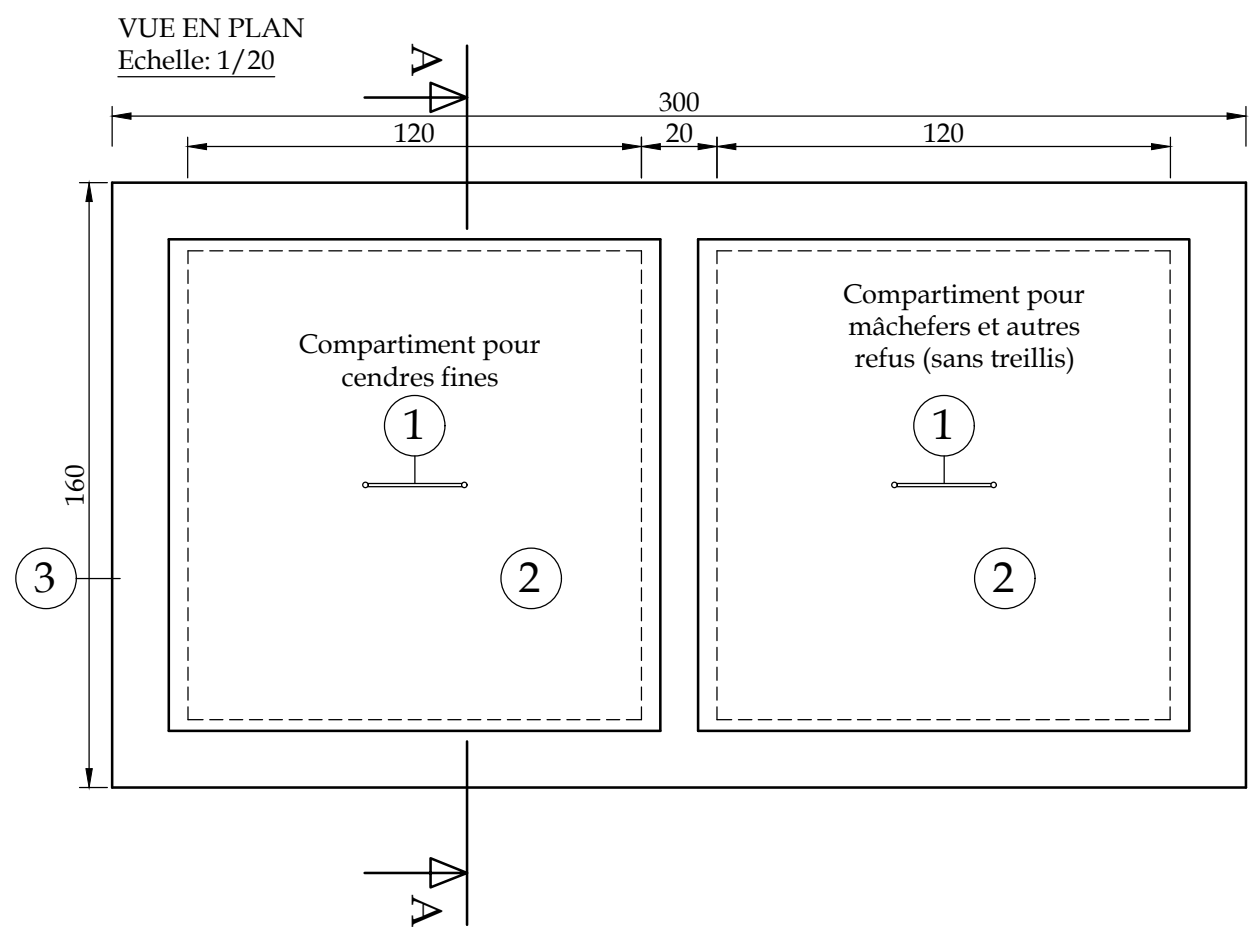


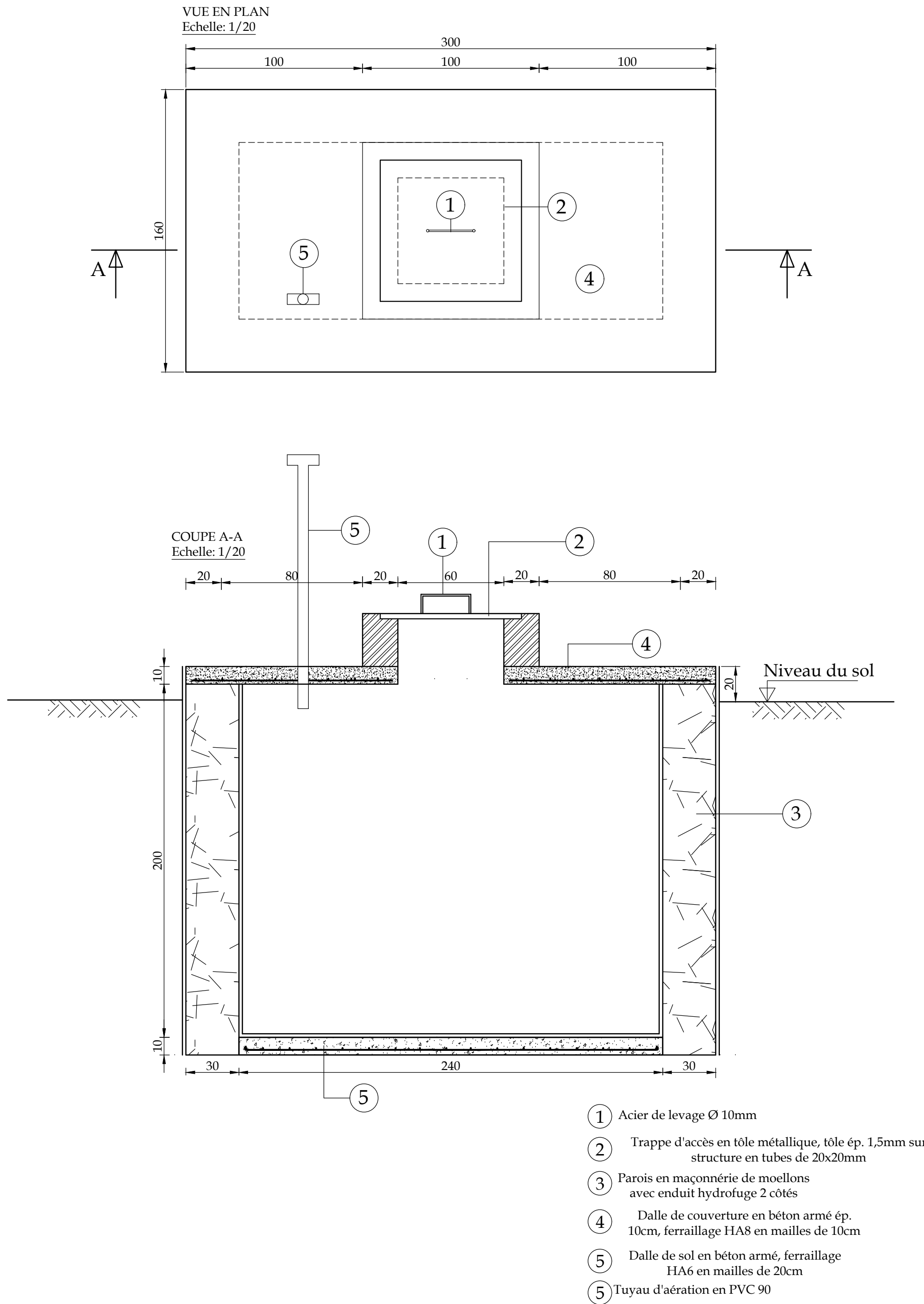
DETAILS INCINERATEUR - Echelle: 1/20



DETAILS FOSSE A CENDRE - Echelle: 1/20

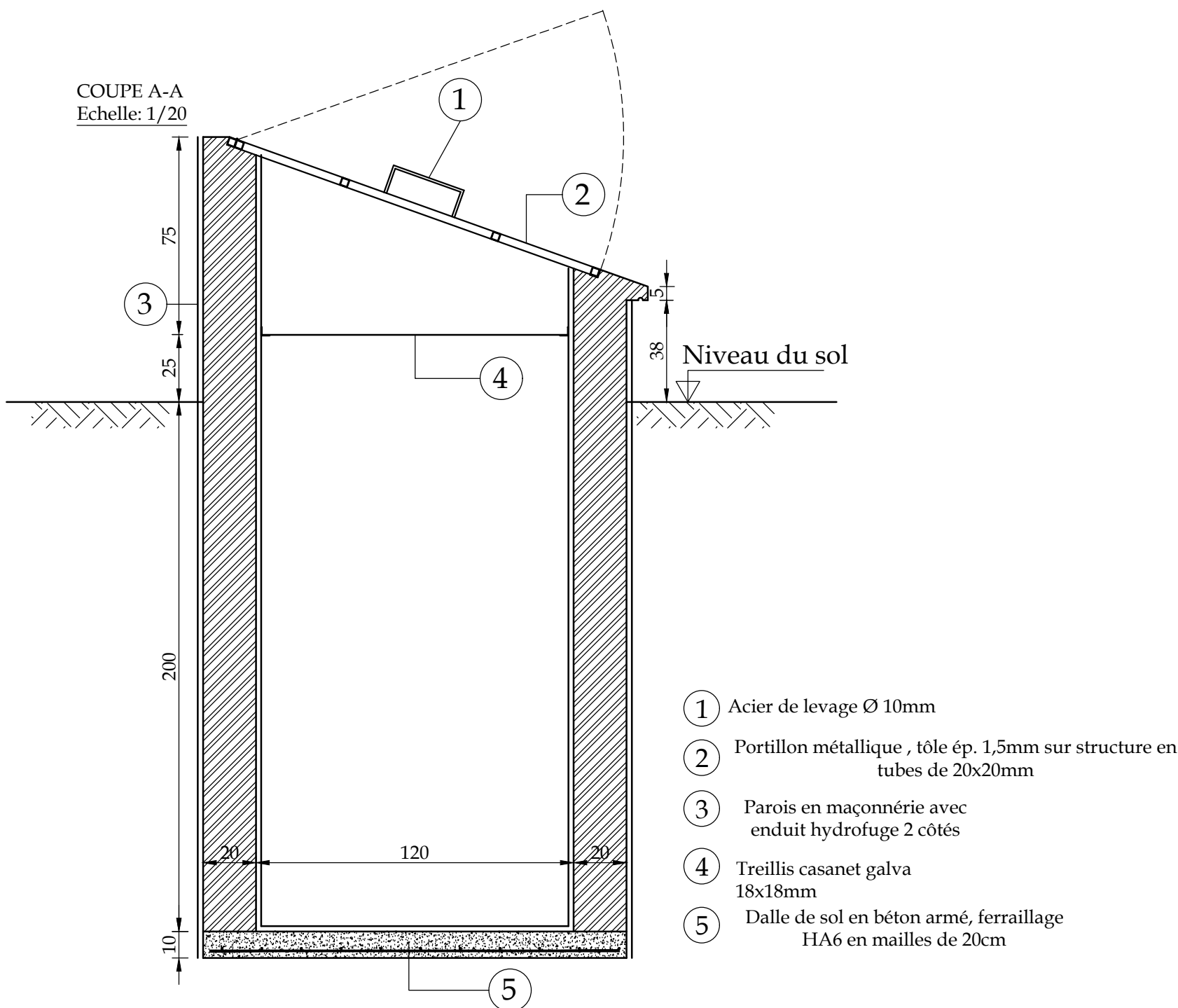
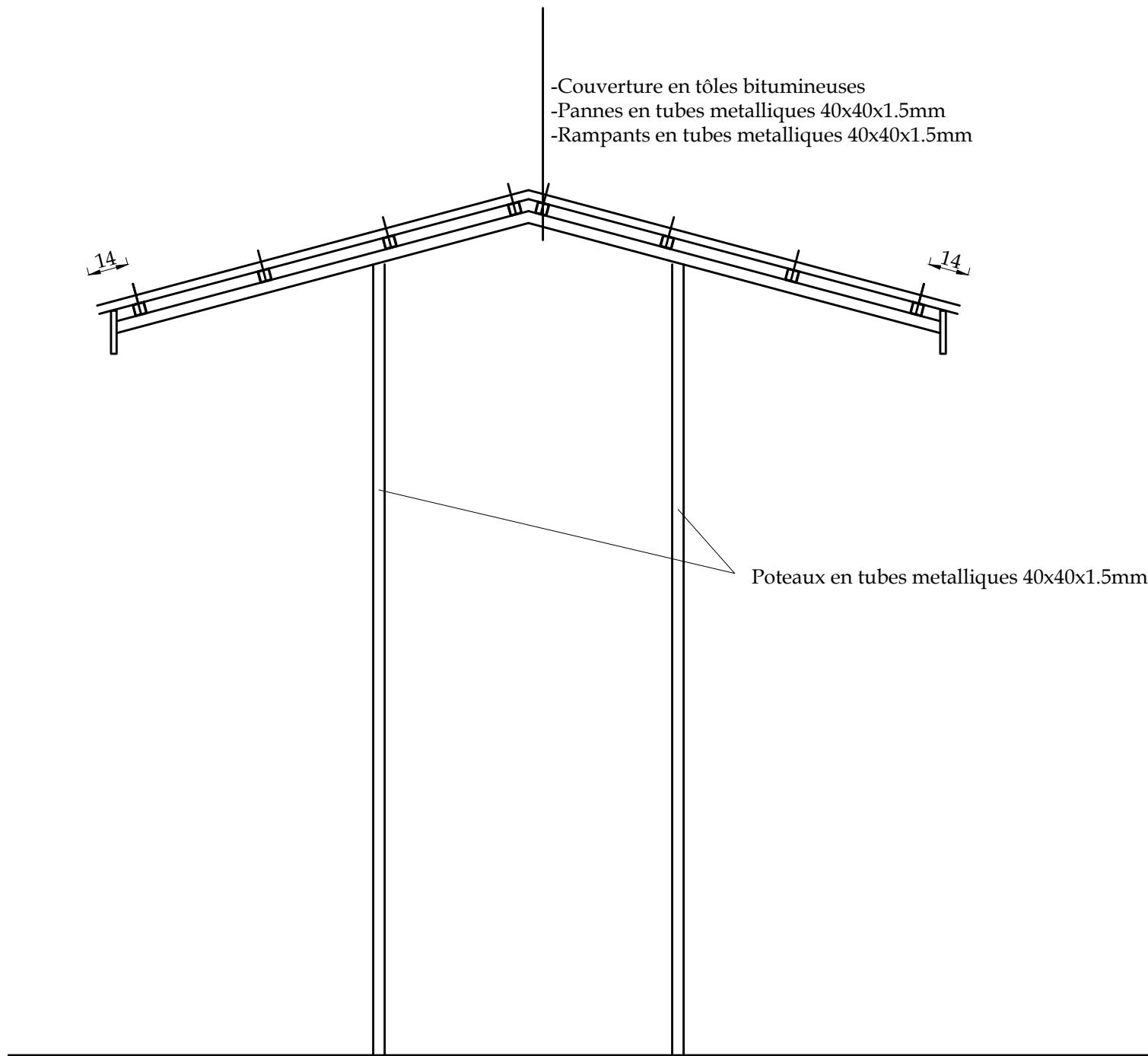


DETAILS FOSSE A DECHETS ORGANIQUES - Echelle: 1/20

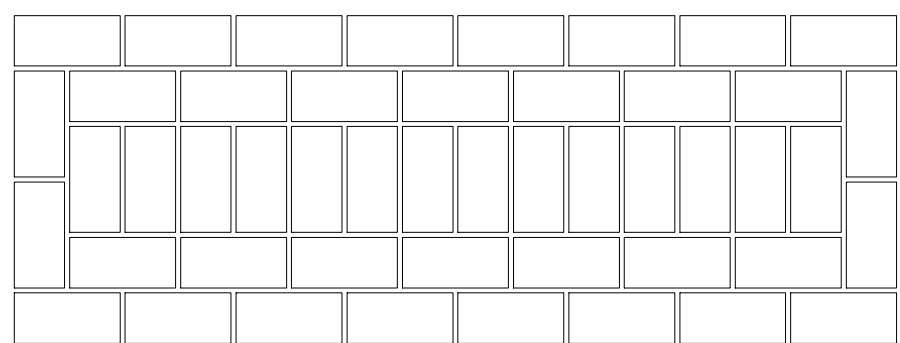


DETAILS DU PASSAGE COUVERT

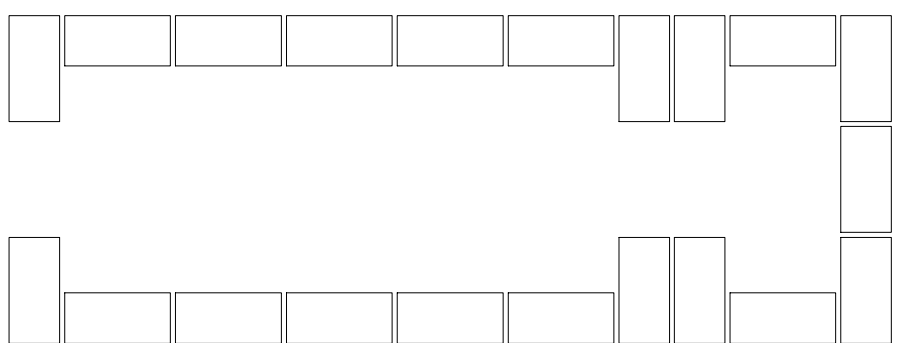
Ech 1/20



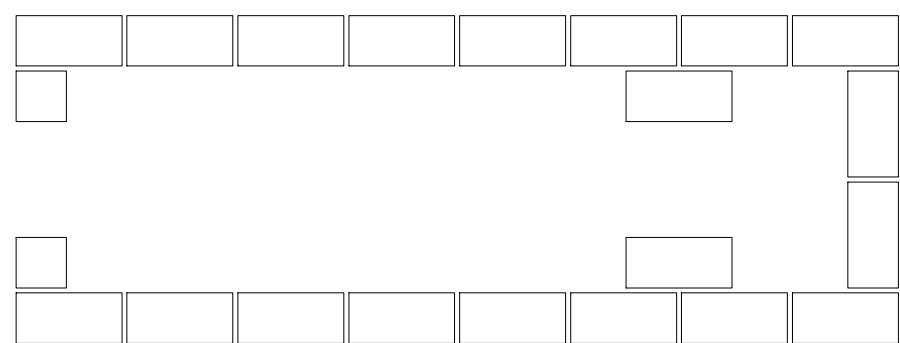
1ère Couche  
Vue en plan



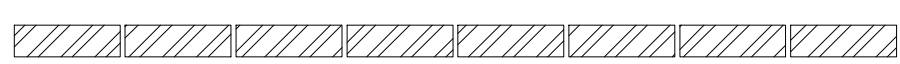
2è et 4è Couches  
Vue en plan



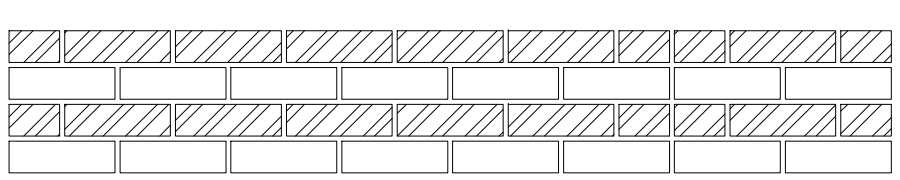
3è et 5è Couches  
Vue en plan



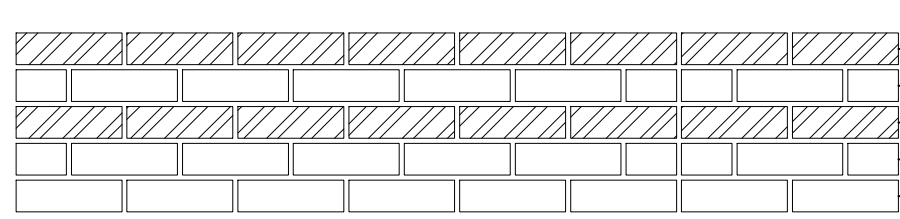
Elévation



Elévation

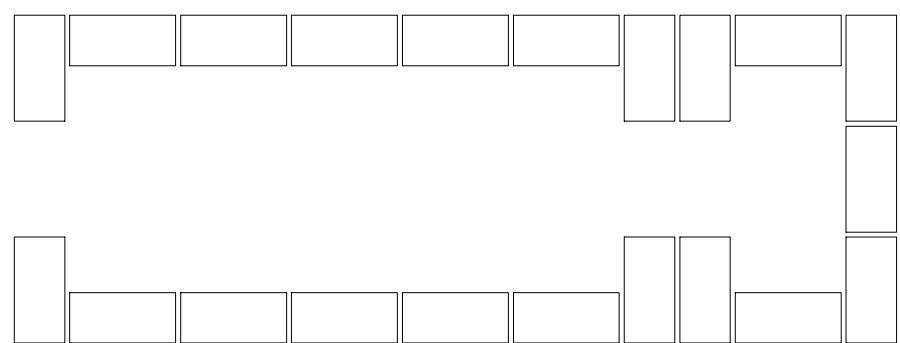


Elévation

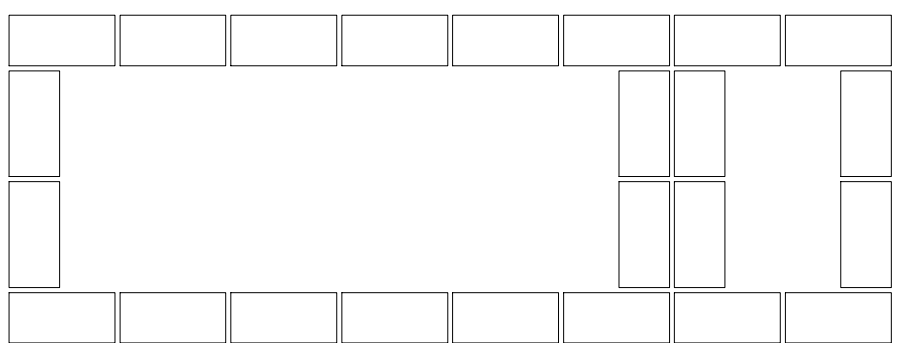


→5è couche  
→4è couche  
→3è couche  
→2è couche  
→1ère couche

6è Couches  
Vue en plan



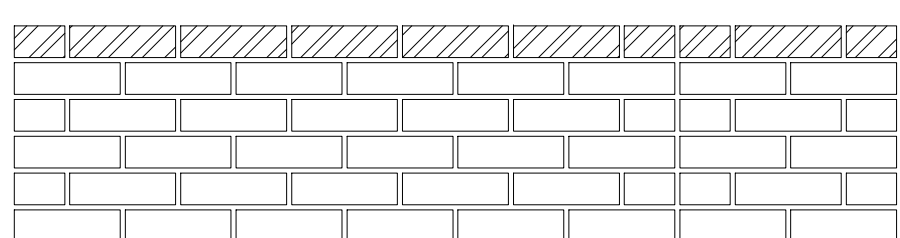
7è, 9è, 11è, 13è et 15è Couches  
Vue en plan



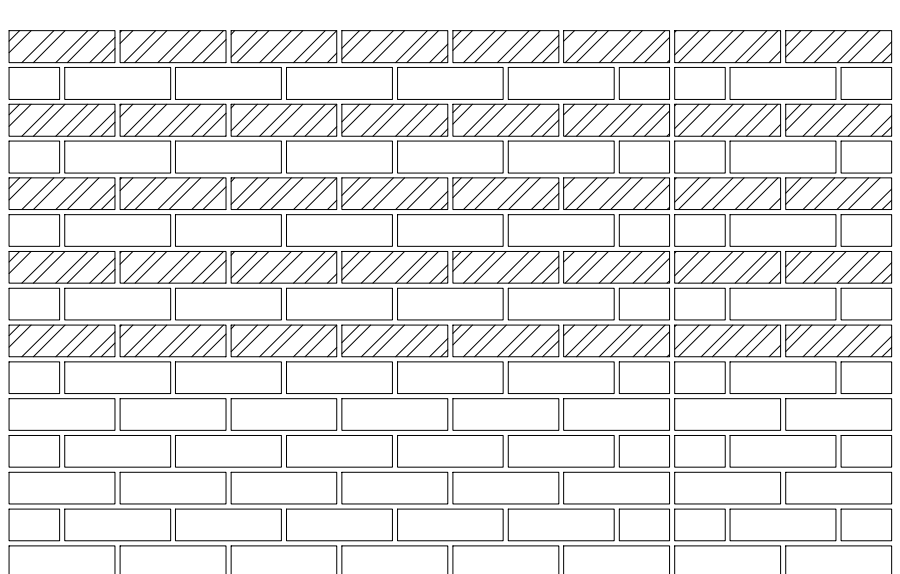
8è, 10è, 12è, 14è et 16è Couches  
Vue en plan



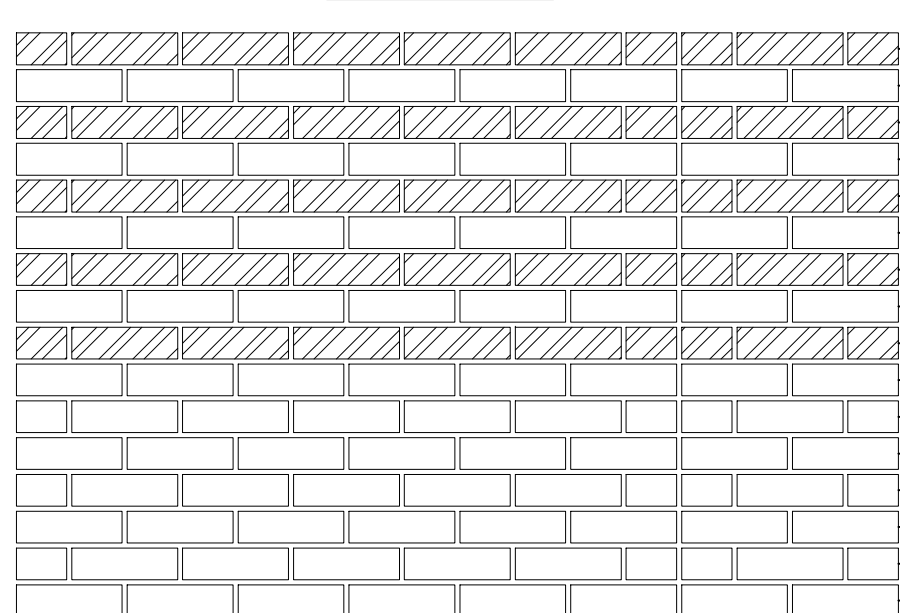
Elévation



Elévation

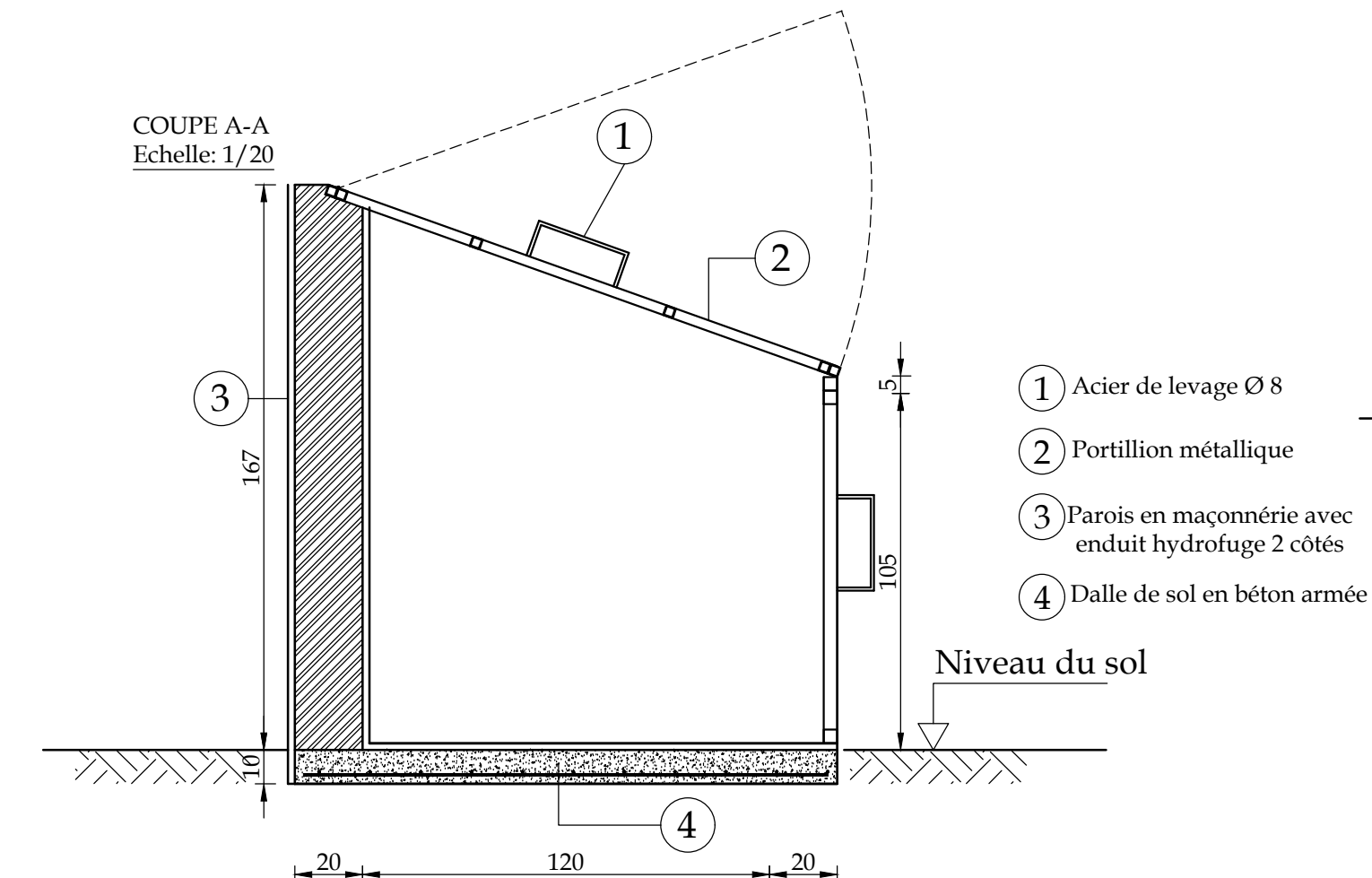
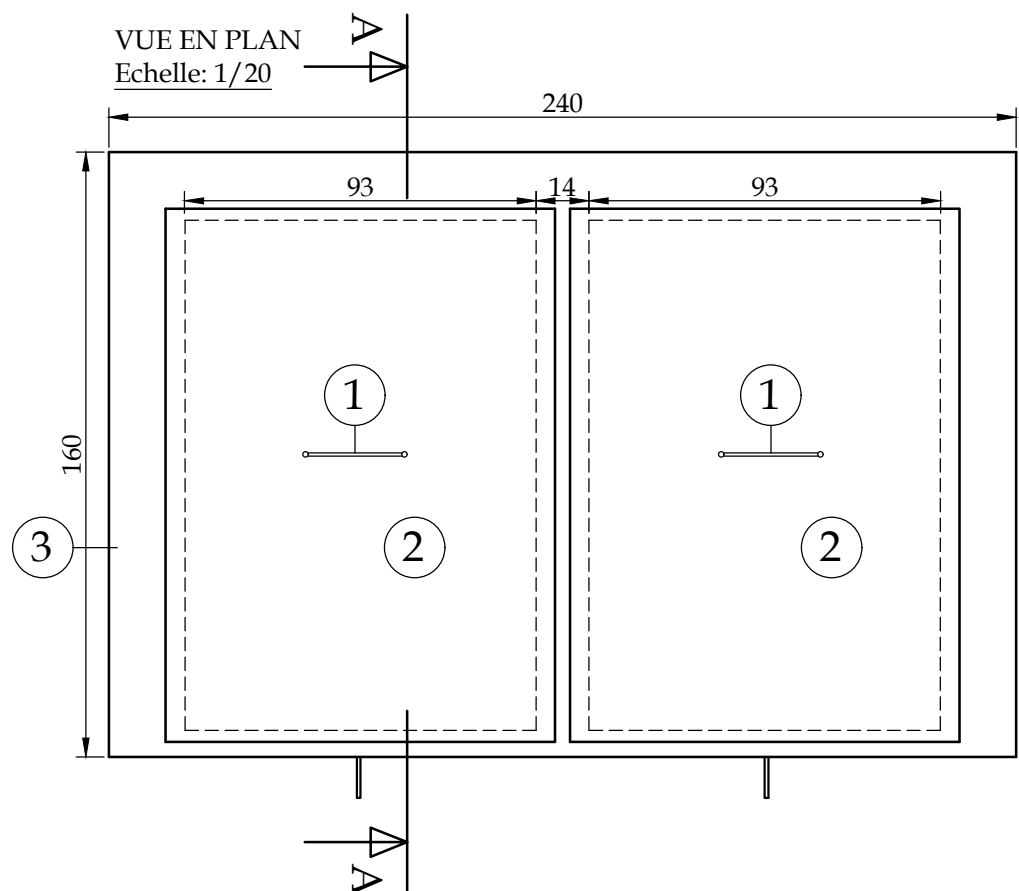


Elévation

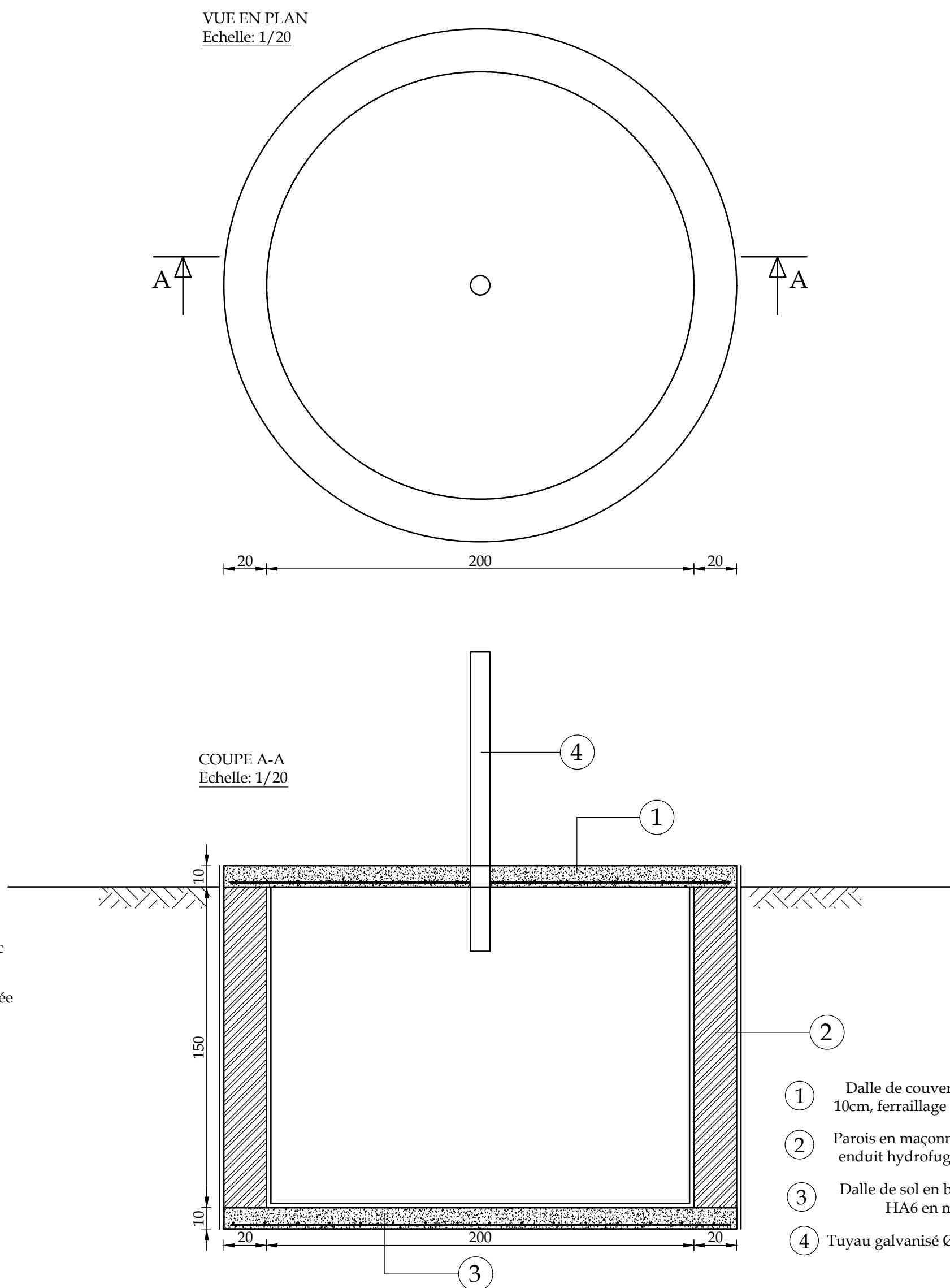


→16è couche  
→15è couche  
→14è couche  
→13è couche  
→12è couche  
→11è couche  
→10è couche  
→9è couche  
→8è couche  
→7è couche  
→6è couche  
→5è couche  
→4è couche  
→3è couche  
→2è couche  
→1ère couche

DETAILS POUBELLE - Echelle: 1/20



DETAILS FOSSE A AIGUILLE - Echelle: 1/20



<b>LE GENIE CIVIL</b> BP 376 Bujumbura <b>Burundi.</b> Tél. : 257 75 142 886 257 75 839 965	<b>République du Burundi</b>  <b>PROGRAMME D'APPUI INSTITUTIONNEL AU SECTEUR DE LA SANTE(PAISS)</b>
	<b>Projet de construction du centre de santé de GIHOSHA et extension du Centre de Santé de BUSORO</b>
	<b>Détails incinérateur,déchéterie et passage couvert</b>
	<b>APD</b>
<b>Plan n°D.01</b>	<b>Date : Octobre.2022</b>
	<b>Chef de mission : Jean Marc ROSSIGNOL</b>
	<b>Ingénieur : Kelly MATEGEKO</b>
	<b>Topographe : Nestor SEBUSHAHU</b>
	<b>Echelle : 1/10,1/20</b>